



## OPEN FRAME SOLENOIDS | PULL TYPE

We offer a broad range of high quality solenoids in standard and customized configurations. Our customer-centric approach makes us the ideal supplier for your project, especially to instrument and apparatus builders. In addition, we offer immediate delivery, thanks to always having a high number of motors in stock.

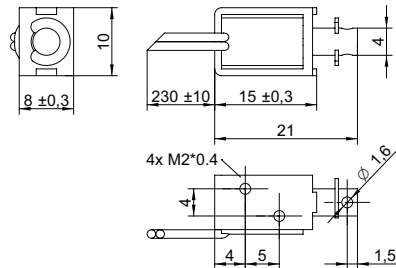
### Customizations include:

- ✓ Customized harness
- ✓ Winding configuration
- ✓ Shaft configuration
- ✓ And more...

# TABLE OF CONTENTS

MODEL	LENGTH mm	WIDTH mm	HEIGHT mm	PAGE
F0415L	15	8	10	<a href="#">1</a>
F0520L	20	13	16	<a href="#">2</a>
F0530L	30	10	15	<a href="#">3</a>
F0626L	26	16	20	<a href="#">4</a>
F0630L	29.5	19	16	<a href="#">5</a>
F0730L	30.2	16	14	<a href="#">6</a>
F0826L	26	25	22	<a href="#">7</a>
F0837L	37	26	20	<a href="#">8</a>
F1037L	37	26	20	<a href="#">9</a>
F1039L	39	20	26	<a href="#">10</a>
F1040L	40	24	29	<a href="#">11</a>
F1250L	50	37	41	<a href="#">12</a>
F1253L	53.5	27	30	<a href="#">13</a>
F1564L	64	38	30	<a href="#">14</a>
F1578L	78	44	51	<a href="#">15</a>
F1585L	85	35	40	<a href="#">16</a>
F1683L	84	52	58	<a href="#">17</a>

## DRAWING (mm)



## PHOTO



## MODEL NO. DESIGNATION

F0415L - VOLTAGE

Example: F0415L-03V

## ACCESSORIES

C = customizations are offered on demand even for smaller quantities. Typical customizations are indicated with a green dot at column end. Please contact us for any customization request.

## SOLENOID DATA

	%	100	50	25	10
Duty cycle	%	100	50	25	10
Power	W	0.8	1.6	3.2	8
Max. time in energized state	s	∞	50	18	3

## PERFORMANCE DATA F0415L-03V

	%	100	50	25	10
Duty cycle	%	100	50	25	10
Individual voltages	V	3	4.2	6	9.5
Resistance	Ω	11			

## PERFORMANCE DATA F0415L-06V

	%	100	50	25	10
Duty cycle	%	100	50	25	10
Individual voltages	V	6	8.5	12	19
Resistance	Ω	45			

## PERFORMANCE DATA F0415L-12V

	%	100	50	25	10
Duty cycle	%	100	50	25	10
Individual voltages	V	12	17	24	38
Resistance	Ω	180			

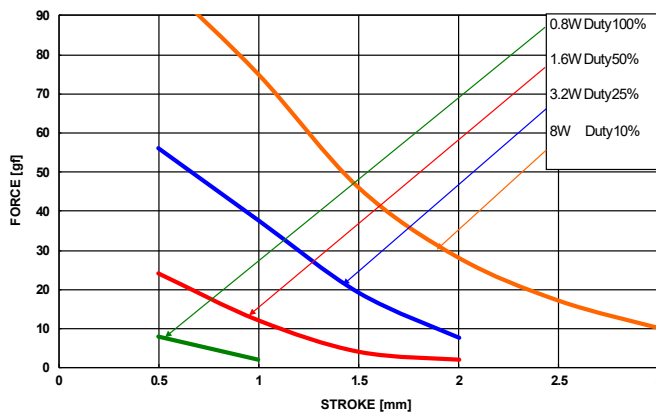
## PERFORMANCE DATA F0415L-24V

	%	100	50	25	10
Duty cycle	%	100	50	25	10
Individual voltages	V	24	34	48	76
Resistance	Ω	720			

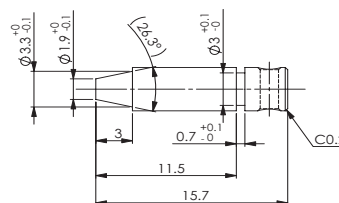
## SOLENOID FEATURES AND STANDARD DATA

Type	Pull type DC solenoid		●
Nominal voltage range <sup>1</sup>	V	3 to 24	●
Loading force @ 3.5 mm compression	g	3.5	
Cable	Flying wires		●
Cable length	mm	230	
Service life	At least 500000 single strokes		
Return spring	Yes		
Plunger material	Carbon steel 12L14		
IP rating	IP00		
Insulation class	B		
Weight	g	5.4	
Operating temperature	°C	-5 to 40	
Manufacturing standard	ISO9001:2008   ISO/TS 16949:2002		
CE label   UL label	No   No		

## PERFORMANCE GRAPH



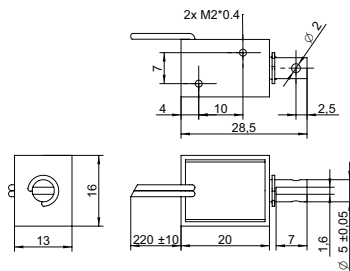
## PLUNGER PROFILE



## NOTESaB

- Nominal voltages, 100 % duty cycle.
- Measured at 20°C.

## DRAWING (mm)



## PHOTO



## MODEL NO. DESIGNATION

F0520L - VOLTAGE

Example: F0520L-06V

## ACCESSORIES

C = customizations are offered on demand even for smaller quantities. Typical customizations are indicated with a green dot at column end. Please contact us for any customization request.

### SOLENOID DATA

	%	100	50	25	10
Duty cycle	%	100	50	25	10
Power	W	1.6	3.2	6.4	16
Max. time in energized state	s	∞	55	19	3

### PERFORMANCE DATA F0520L-06V

	%	100	50	25	10
Duty cycle	%	100	50	25	10
Individual voltages	V	6	8.5	12	19
Resistance	Ω	23			

### PERFORMANCE DATA F0520L-12V

	%	100	50	25	10
Duty cycle	%	100	50	25	10
Individual voltages	V	12	17	24	38
Resistance	Ω	90			

### PERFORMANCE DATA F0520L-24V

	%	100	50	25	10
Duty cycle	%	100	50	25	10
Individual voltages	V	24	34	48	76
Resistance	Ω	360			

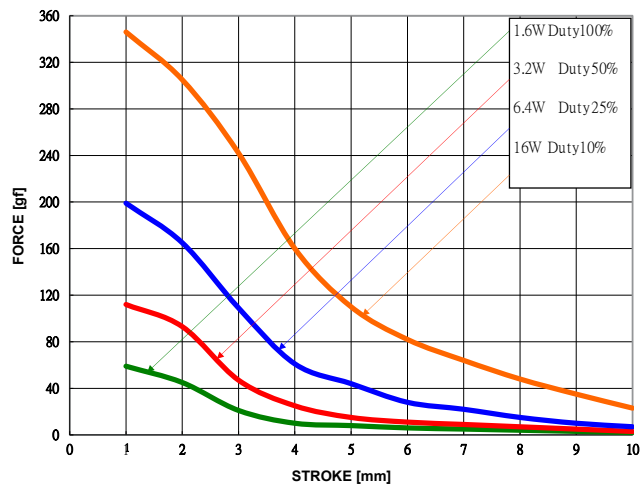
### PERFORMANCE DATA F0520L-48V

	%	100	50	25	10
Duty cycle	%	100	50	25	10
Individual voltages	V	48	68	96	152
Resistance	Ω	1440			

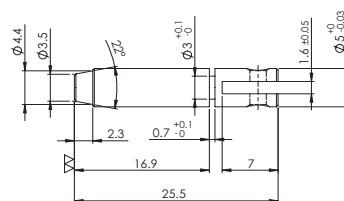
### SOLENOID FEATURES AND STANDARD DATA

Type	Pull type DC solenoid		●
Nominal voltage range <sup>1</sup>	V	6 to 48	●
Loading force @ 3 mm compression	g	18	
Cable	Flying wires		●
Cable length	mm	230	
Service life	At least 500000 single strokes		
Return spring	Yes		
Plunger material	Carbon steel 12L14		
IP rating	IP00		
Insulation class	B		
Weight	g	18	
Operating temperature	°C	-5 to 40	
Manufacturing standard	ISO9001:2008   ISO/TS 16949:2002		
CE label   UL label	No   No		

### PERFORMANCE GRAPH



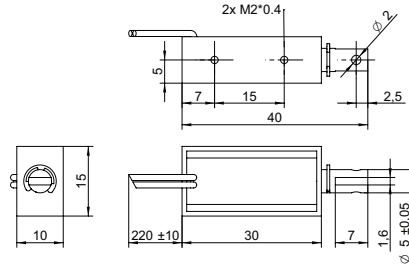
### PLUNGER PROFILE



### NOTES

- Nominal voltages, 100 % duty cycle.
- Measured at 20°C.

### DRAWING (mm)



### PHOTO



### MODEL NO. DESIGNATION

F0530L - VOLTAGE

Example: F0530L-06V

### ACCESSORIES

C = customizations are offered on demand even for smaller quantities. Typical customizations are indicated with a green dot at column end. Please contact us for any customization request.

### SOLENOID DATA

					C
Duty cycle	%	100	50	25	10
Power	W	1.7	3.4	6.8	17
Max. time in energized state	s	∞	50	18	2

### PERFORMANCE DATA F0530L-06V

						C
Duty cycle	%	100	50	25	10	
Individual voltages	V	6	8.5	12	19	
Resistance	Ω	22				

### PERFORMANCE DATA F0530L-12V

						C
Duty cycle	%	100	50	25	10	
Individual voltages	V	12	17	24	38	
Resistance	Ω	85				

### PERFORMANCE DATA F0530L-24V

						C
Duty cycle	%	100	50	25	10	
Individual voltages	V	24	34	48	76	
Resistance	Ω	339				

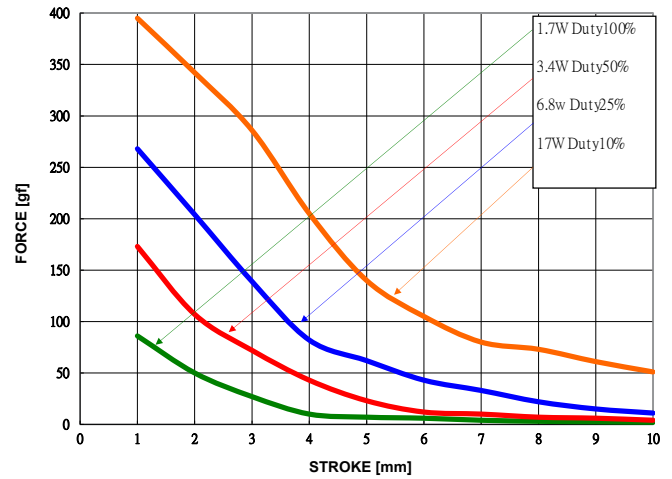
### PERFORMANCE DATA F0530L-48V

						C
Duty cycle	%	100	50	25	10	
Individual voltages	V	48	68	96	152	
Resistance	Ω	1355				

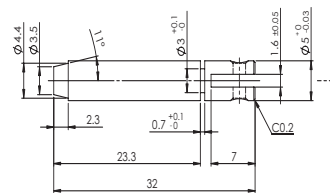
### SOLENOID FEATURES AND STANDARD DATA

			C
Type	Pull type DC solenoid		●
Nominal voltage range <sup>1</sup>	V	6 to 48	●
Loading force @ 3 mm compression	g	18	
Cable	Flying wires		●
Cable length	mm	230	
Service life	At least 500000 single strokes		
Return spring	Yes		
Plunger material	Carbon steel 12L14		
IP rating	IP00		
Insulation class	B		
Weight	g	23	
Operating temperature	°C	-5 to 40	
Manufacturing standard	ISO9001:2008   ISO/TS 16949:2002		
CE label   UL label	No   No		

### PERFORMANCE GRAPH



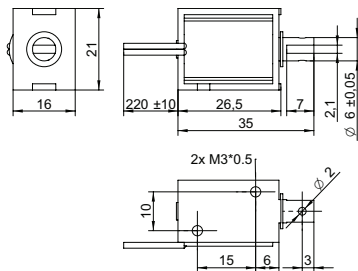
### PLUNGER PROFILE



### NOTES

- Nominal voltages, 100 % duty cycle.
- Measured at 20°C.

## DRAWING (mm)



## PHOTO



## MODEL NO. DESIGNATION

F0626L - VOLTAGE

Example: F0626L-06V

## ACCESSORIES

C = customizations are offered on demand even for smaller quantities. Typical customizations are indicated with a green dot at column end. Please contact us for any customization request.

### SOLENOID DATA

	%	100	50	25	10
Duty cycle	%	100	50	25	10
Power	W	2.1	4.2	8.4	21
Max. time in energized state	s	∞	55	19	3

### PERFORMANCE DATA F0626L-06V

	%	100	50	25	10
Duty cycle	%	100	50	25	10
Individual voltages	V	6	8.5	12	19
Resistance	Ω	17			

### PERFORMANCE DATA F0626L-12V

	%	100	50	25	10
Duty cycle	%	100	50	25	10
Individual voltages	V	12	17	24	38
Resistance	Ω	69			

### PERFORMANCE DATA F0626L-24V

	%	100	50	25	10
Duty cycle	%	100	50	25	10
Individual voltages	V	24	34	48	76
Resistance	Ω	275			

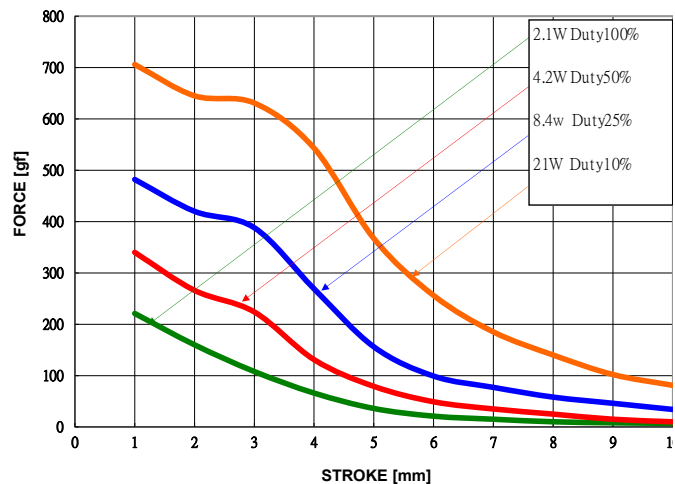
### PERFORMANCE DATA F0626L-48V

	%	100	50	25	10
Duty cycle	%	100	50	25	10
Individual voltages	V	48	68	96	152
Resistance	Ω	1095			

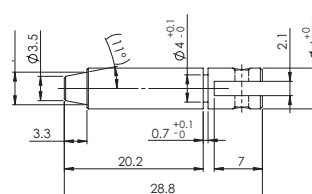
### SOLENOID FEATURES AND STANDARD DATA

Type	Pull type DC solenoid		●
Nominal voltage range <sup>1</sup>	V	6 to 48	●
Loading force @ 1 mm compression	g	30	
Cable	Flying wires		●
Cable length	mm	230	
Service life	At least 500000 single strokes		
Return spring	Yes		
Plunger material	Carbon steel 12L14		
IP rating	IP00		
Insulation class	B		
Weight	g	43	
Operating temperature	°C	-5 to 40	
Manufacturing standard	ISO9001:2008   ISO/TS 16949:2002		
CE label   UL label	No   No		

### PERFORMANCE GRAPH



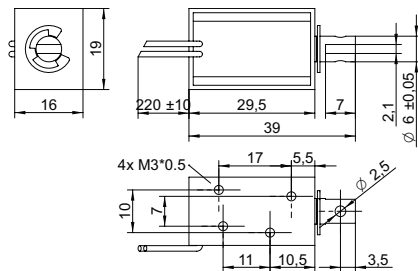
### PLUNGER PROFILE



### NOTES

- Nominal voltages, 100 % duty cycle.
- Measured at 20°C.

### DRAWING (mm)



### PHOTO



### MODEL NO. DESIGNATION

F0630L - VOLTAGE

Example: F0630L-06V

### ACCESSORIES

C = customizations are offered on demand even for smaller quantities. Typical customizations are indicated with a green dot at column end. Please contact us for any customization request.

### SOLENOID DATA

Duty cycle	%	100	50	25	10
Power	W	2.4	4.8	9.6	24
Max. time in energized state	s	∞	55	19	3

### PERFORMANCE DATA F0630L-06V

Duty cycle	%	100	50	25	10
Individual voltages	V	6	8.5	12	19
Resistance	Ω	15			

### PERFORMANCE DATA F0630L-12V

Duty cycle	%	100	50	25	10
Individual voltages	V	12	17	24	38
Resistance	Ω	60			

### PERFORMANCE DATA F0630L-24V

Duty cycle	%	100	50	25	10
Individual voltages	V	24	34	48	76
Resistance	Ω	240			

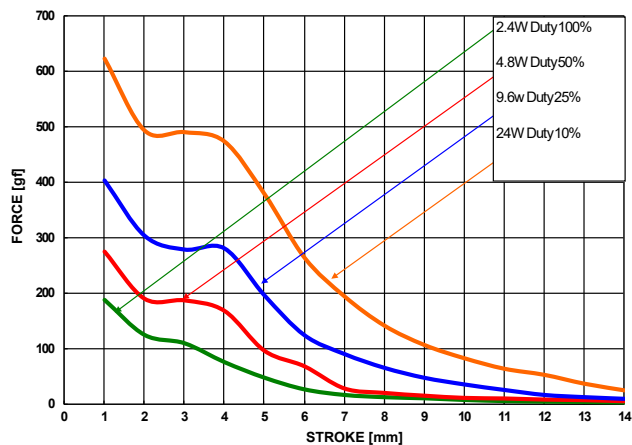
### PERFORMANCE DATA F0630L-48V

Duty cycle	%	100	50	25	10
Individual voltages	V	48	68	96	152
Resistance	Ω	960			

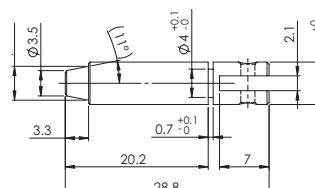
### SOLENOID FEATURES AND STANDARD DATA

Type	Pull type DC solenoid		●
Nominal voltage range <sup>1</sup>	V	6 to 48	●
Loading force @ 1 mm compression	g	30	
Cable	Flying wires		●
Cable length	mm	230	
Service life	At least 500000 single strokes		
Return spring	Yes		
Plunger material	Carbon steel 12L14		
IP rating	IP00		
Insulation class	B		
Weight	g	42	
Operating temperature	°C	-5 to 40	
Manufacturing standard	ISO9001:2008   ISO/TS 16949:2002		
CE label   UL label	No   No		

### PERFORMANCE GRAPH



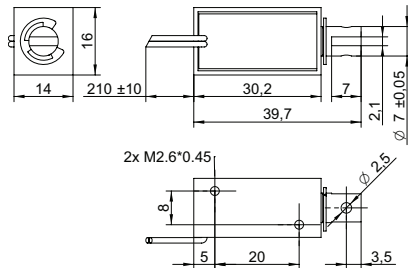
### PLUNGER PROFILE



### NOTES

- Nominal voltages, 100 % duty cycle.
- Measured at 20°C.

## DRAWING (mm)



## PHOTO



## MODEL NO. DESIGNATION

F0730L - VOLTAGE

Example: F0730L-06V

## ACCESSORIES

C = customizations are offered on demand even for smaller quantities. Typical customizations are indicated with a green dot at column end. Please contact us for any customization request.

### SOLENOID DATA

Duty cycle	%	100	50	25	10
Power	W	2.2	4.4	8.8	22
Max. time in energized state	s	∞	55	19	3

### PERFORMANCE DATA F0730L-06V

Duty cycle	%	100	50	25	10
Individual voltages	V	6	8.5	12	19
Resistance	Ω	16			

### PERFORMANCE DATA F0730L-12V

Duty cycle	%	100	50	25	10
Individual voltages	V	12	17	24	38
Resistance	Ω	66			

### PERFORMANCE DATA F0730L-24V

Duty cycle	%	100	50	25	10
Individual voltages	V	24	34	48	76
Resistance	Ω	262			

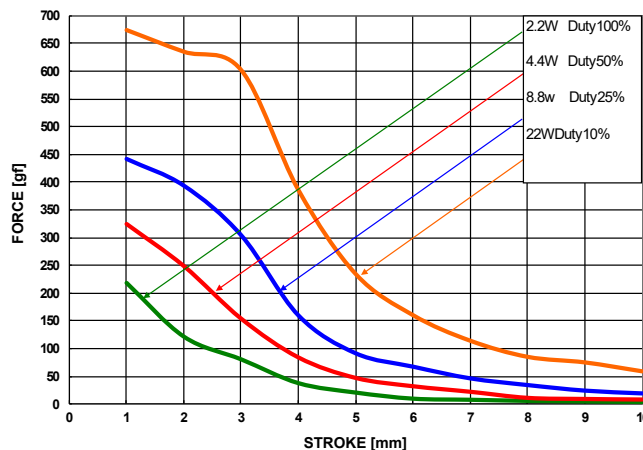
### PERFORMANCE DATA F0730L-48V

Duty cycle	%	100	50	25	10
Individual voltages	V	48	68	96	152
Resistance	Ω	1047			

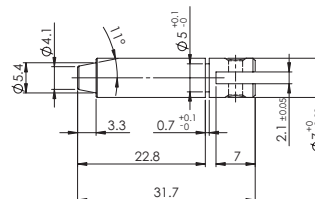
### SOLENOID FEATURES AND STANDARD DATA

Type	Pull type DC solenoid		●
Nominal voltage range <sup>1</sup>	V	6 to 48	●
Loading force @ 1 mm compression	g	93	
Cable	Flying wires		●
Cable length	mm	230	
Service life	At least 500000 single strokes		
Return spring	Yes		
Plunger material	Carbon steel 12L14		
IP rating	IP00		
Insulation class	B		
Weight	g	33	
Operating temperature	°C	-5 to 40	
Manufacturing standard	ISO9001:2008   ISO/TS 16949:2002		
CE label   UL label	No   No		

### PERFORMANCE GRAPH



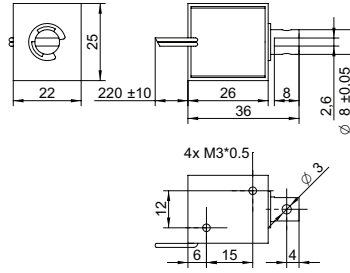
### PLUNGER PROFILE



### NOTES

- Nominal voltages, 100 % duty cycle.
- Measured at 20°C.

### DRAWING (mm)



### PHOTO



### MODEL NO. DESIGNATION

F0826L - VOLTAGE

Example: F0826L-06V

### ACCESSORIES

C = customizations are offered on demand even for smaller quantities. Typical customizations are indicated with a green dot at column end. Please contact us for any customization request.

### SOLENOID DATA

					C
Duty cycle	%	100	50	25	10
Power	W	2.8	5.6	11	28
Max. time in energized state	s	∞	100	36	7

### PERFORMANCE DATA F0826L-06V

						C
Duty cycle	%	100	50	25	10	
Individual voltages	V	6	8.5	12	19	
Resistance	Ω	13				

### PERFORMANCE DATA F0826L-12V

						C
Duty cycle	%	100	50	25	10	
Individual voltages	V	12	17	24	38	
Resistance	Ω	51				

### PERFORMANCE DATA F0826L-24V

						C
Duty cycle	%	100	50	25	10	
Individual voltages	V	24	34	48	76	
Resistance	Ω	206				

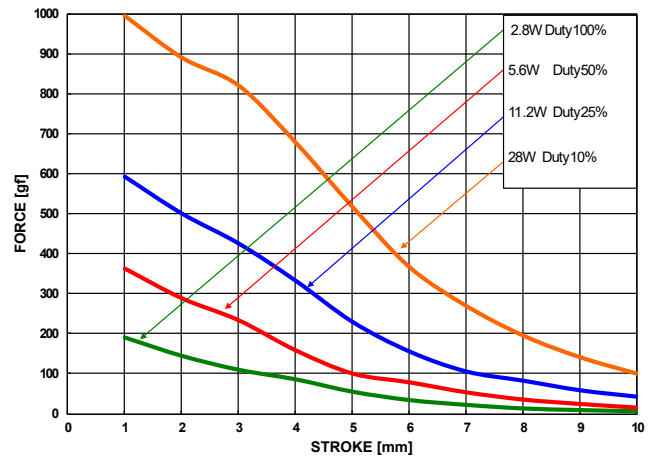
### PERFORMANCE DATA F0826L-48V

						C
Duty cycle	%	100	50	25	10	
Individual voltages	V	48	68	96	152	
Resistance	Ω	823				

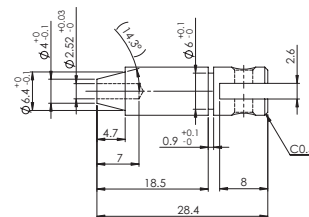
### SOLENOID FEATURES AND STANDARD DATA

			C
Type	Pull type DC solenoid		●
Nominal voltage range <sup>1</sup>	V	6 to 48	●
Loading force @ 3 mm compression	g	78	
Cable	Flying wires		●
Cable length	mm	230	
Service life	At least 500000 single strokes		
Return spring	Yes		
Plunger material	Carbon steel 12L14		
IP rating	IP00		
Insulation class	B		
Weight	g	66	
Operating temperature	°C	-5 to 40	
Manufacturing standard	ISO9001:2008   ISO/TS 16949:2002		
CE label   UL label	No   No		

### PERFORMANCE GRAPH



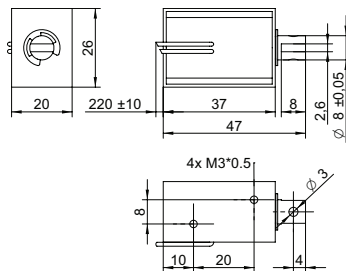
### PLUNGER PROFILE



### NOTES

- Nominal voltages, 100 % duty cycle.
- Measured at 20°C.

## DRAWING (mm)



## PHOTO



## MODEL NO. DESIGNATION

F0837L - VOLTAGE

Example: F0837L-06V

## ACCESSORIES

C = customizations are offered on demand even for smaller quantities. Typical customizations are indicated with a green dot at column end. Please contact us for any customization request.

### SOLENOID DATA

				C			
Duty cycle	%	100	50	25	10		
Power	W	4	8	16	40		
Max. time in energized state	s	∞	100	36	7		

### PERFORMANCE DATA F0837L-06V

		C			
Duty cycle	%	100	50	25	10
Individual voltages	V	6	8.5	12	19
Resistance	Ω	9			

### PERFORMANCE DATA F0837L-12V

		C			
Duty cycle	%	100	50	25	10
Individual voltages	V	12	17	24	38
Resistance	Ω	36			

### PERFORMANCE DATA F0837L-24V

		C			
Duty cycle	%	100	50	25	10
Individual voltages	V	24	34	48	76
Resistance	Ω	144			

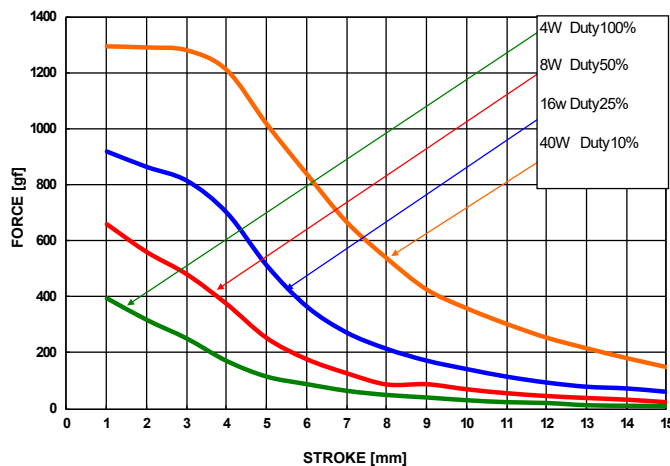
### PERFORMANCE DATA F0837L-48V

		C			
Duty cycle	%	100	50	25	10
Individual voltages	V	48	68	96	152
Resistance	Ω	576			

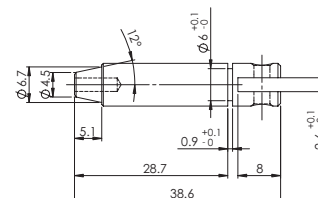
### SOLENOID FEATURES AND STANDARD DATA

		C	
Type	Pull type DC solenoid		●
Nominal voltage range <sup>1</sup>	V	6 to 48	●
Loading force @ 5 mm compression	g	48	
Cable	Flying wires		●
Cable length	mm	230	
Service life	At least 500000 single strokes		
Return spring	Yes		
Plunger material	Carbon steel 12L14		
IP rating	IP00		
Insulation class	B		
Weight	g	96	
Operating temperature	°C	-5 to 40	
Manufacturing standard	ISO9001:2008   ISO/TS 16949:2002		
CE label   UL label	No   No		

### PERFORMANCE GRAPH



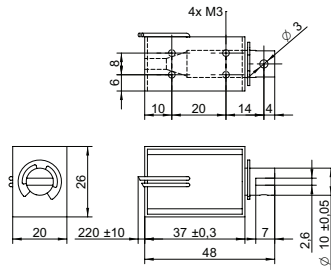
### PLUNGER PROFILE



### NOTES

- Nominal voltages, 100 % duty cycle.
- Measured at 20°C.

## DRAWING (mm)



## PHOTO



## MODEL NO. DESIGNATION

F1037L - VOLTAGE

Example: F1037L-06V

## ACCESSORIES

C = customizations are offered on demand even for smaller quantities. Typical customizations are indicated with a green dot at column end. Please contact us for any customization request.

### SOLENOID DATA

Duty cycle	%	100	50	25	10
Power	W	4	8	16	40
Max. time in energized state	s	∞	100	36	7

### PERFORMANCE DATA F1037L-06V

Duty cycle	%	100	50	25	10
Individual voltages	V	6	8.5	12	19
Resistance	Ω	9			

### PERFORMANCE DATA F1037L-12V

Duty cycle	%	100	50	25	10
Individual voltages	V	12	17	24	38
Resistance	Ω	36			

### PERFORMANCE DATA F1037L-24V

Duty cycle	%	100	50	25	10
Individual voltages	V	24	34	48	76
Resistance	Ω	144			

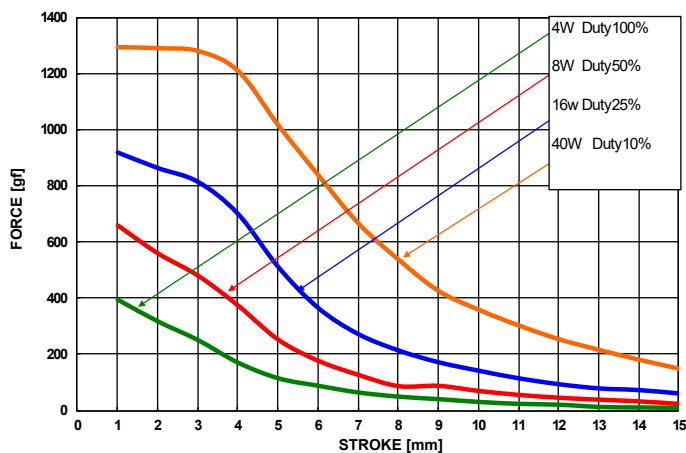
### PERFORMANCE DATA F1037L-48V

Duty cycle	%	100	50	25	10
Individual voltages	V	48	68	96	152
Resistance	Ω	576			

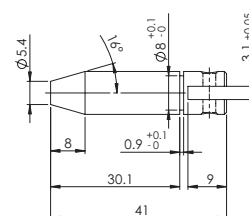
### SOLENOID FEATURES AND STANDARD DATA

Type	Pull type DC solenoid		●
Nominal voltage range <sup>1</sup>	V	6 to 48	●
Loading force @ 5 mm compression	g	60	
Cable	Flying wires		●
Cable length	mm	230	
Service life	At least 500000 single strokes		
Return spring	Yes		
Plunger material	Carbon steel 12L14		
IP rating	IP00		
Insulation class	B		
Weight	g	96	
Operating temperature	°C	-5 to 40	
Manufacturing standard	ISO9001:2008   ISO/TS 16949:2002		
CE label   UL label	No   No		

### PERFORMANCE GRAPH



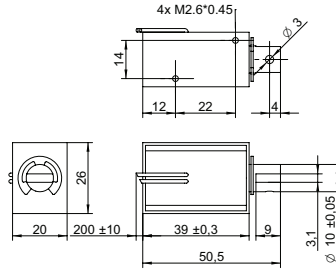
### PLUNGER PROFILE



### NOTES

- Nominal voltages, 100 % duty cycle.
- Measured at 20°C.

### DRAWING (mm)



### PHOTO



### MODEL NO. DESIGNATION

F1039L - VOLTAGE

Example: F1039L-06V

### ACCESSORIES

C = customizations are offered on demand even for smaller quantities. Typical customizations are indicated with a green dot at column end. Please contact us for any customization request.

### SOLENOID DATA

Duty cycle	%	100	50	25	10
Power	W	2.8	5.6	11	28
Max. time in energized state	s	∞	140	50	9

### PERFORMANCE DATA F1039L-06V

Duty cycle	%	100	50	25	10
Individual voltages	V	6	8.5	12	19
Resistance	Ω	13			

### PERFORMANCE DATA F1039L-12V

Duty cycle	%	100	50	25	10
Individual voltages	V	12	17	24	38
Resistance	Ω	51			

### PERFORMANCE DATA F1039L-24V

Duty cycle	%	100	50	25	10
Individual voltages	V	24	34	48	76
Resistance	Ω	206			

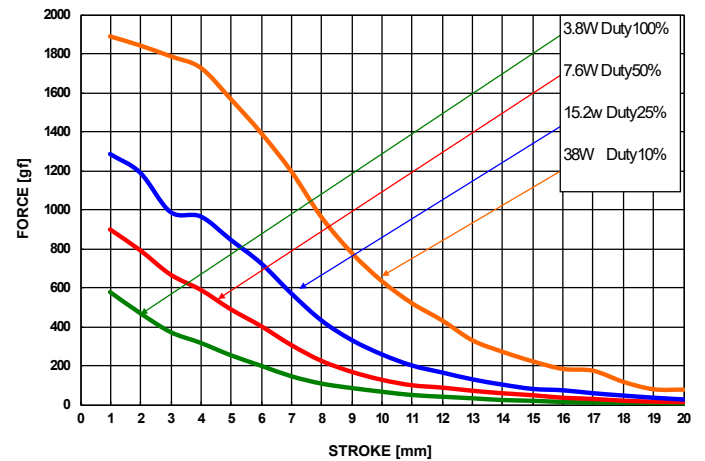
### PERFORMANCE DATA F1039L-48V

Duty cycle	%	100	50	25	10
Individual voltages	V	48	68	96	152
Resistance	Ω	823			

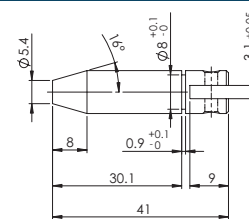
### SOLENOID FEATURES AND STANDARD DATA

Type	Pull type DC solenoid		●
Nominal voltage range <sup>1</sup>	V	6 to 48	●
Loading force @ 5 mm compression	g	60	
Cable	Flying wires		●
Cable length	mm	230	
Service life	At least 500000 single strokes		
Return spring	Yes		
Plunger material	Carbon steel 12L14		
IP rating	IP00		
Insulation class	B		
Weight	g	110	
Operating temperature	°C	-5 to 40	
Manufacturing standard	ISO9001:2008   ISO/TS 16949:2002		
CE label   UL label	No   No		

### PERFORMANCE GRAPH



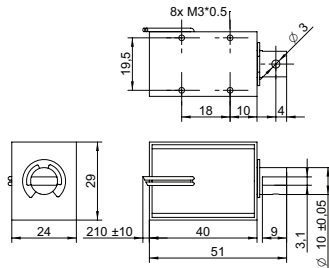
### PLUNGER PROFILE



### NOTES

- Nominal voltages, 100 % duty cycle.
- Measured at 20°C.

## DRAWING (mm)



## PHOTO



## MODEL NO. DESIGNATION

F1040L - VOLTAGE

Example: F1040L-06V

## ACCESSORIES

C = customizations are offered on demand even for smaller quantities. Typical customizations are indicated with a green dot at column end. Please contact us for any customization request.

### SOLENOID DATA

Duty cycle	%	100	50	25	10
Power	W	4.2	8.4	17	42
Max. time in energized state	s	∞	100	36	7

### PERFORMANCE DATA F1040L-06V

Duty cycle	%	100	50	25	10
Individual voltages	V	6	8.5	12	19
Resistance	Ω	13			

### PERFORMANCE DATA F1040L-12V

Duty cycle	%	100	50	25	10
Individual voltages	V	12	17	24	38
Resistance	Ω	51			

### PERFORMANCE DATA F1040L-48V

Duty cycle	%	100	50	25	10
Individual voltages	V	24	34	48	76
Resistance	Ω	206			

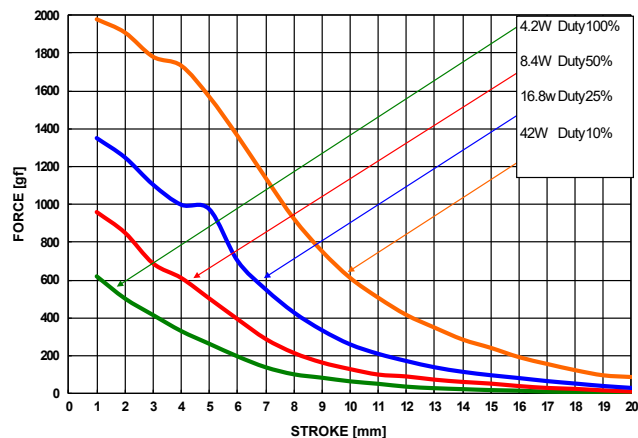
### PERFORMANCE DATA F1040L-48V

Duty cycle	%	100	50	25	10
Individual voltages	V	48	68	96	152
Resistance	Ω	823			

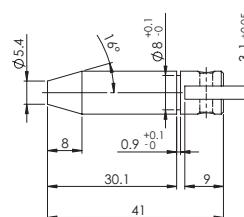
### SOLENOID FEATURES AND STANDARD DATA

Type	Pull type DC solenoid		●
Nominal voltage range <sup>1</sup>	V	6 to 48	●
Loading force @ 5 mm compression	g	60	
Cable	Flying wires		●
Cable length	mm	230	
Service life	At least 500000 single strokes		
Return spring	Yes		
Plunger material	Carbon steel 12L14		
IP rating	IP00		
Insulation class	B		
Weight	g	122	
Operating temperature	°C	-5 to 40	
Manufacturing standard	ISO9001:2008   ISO/TS 16949:2002		
CE label   UL label	No   No		

### PERFORMANCE GRAPH



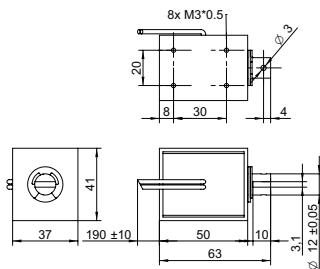
### PLUNGER PROFILE



### NOTES

- Nominal voltages, 100 % duty cycle.
- Measured at 20°C.

## DRAWING (mm)



## PHOTO



## MODEL NO. DESIGNATION

F1250L - VOLTAGE

Example: F1250L-06V

## ACCESSORIES

C = customizations are offered on demand even for smaller quantities. Typical customizations are indicated with a green dot at column end. Please contact us for any customization request.

### SOLENOID DATA

Duty cycle	%	100	50	25	10
Power	W	7.5	15	30	75
Max. time in energized state	s	∞	140	50	9

### PERFORMANCE DATA F1250L-06V

Duty cycle	%	100	50	25	10
Individual voltages	V	6	8.5	12	19
Resistance	Ω	4.8			

### PERFORMANCE DATA F1250L-12V

Duty cycle	%	100	50	25	10
Individual voltages	V	12	17	24	38
Resistance	Ω	19			

### PERFORMANCE DATA F1250L-24V

Duty cycle	%	100	50	25	10
Individual voltages	V	24	34	48	76
Resistance	Ω	77			

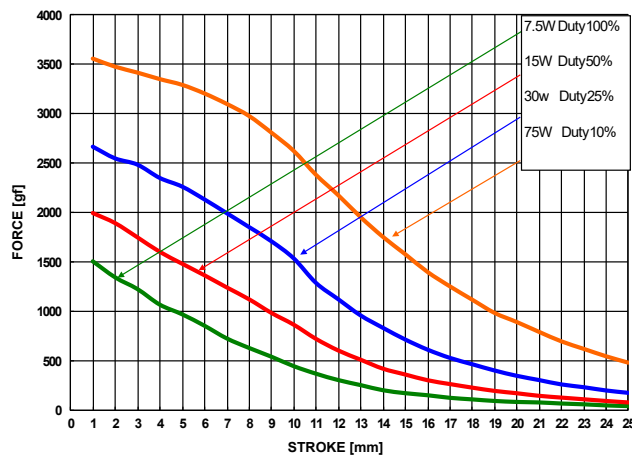
### PERFORMANCE DATA F1250L-48V

Duty cycle	%	100	50	25	10
Individual voltages	V	48	68	96	152
Resistance	Ω	307			

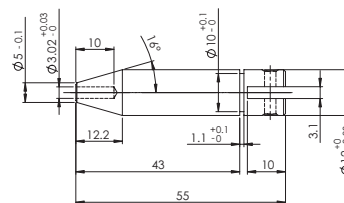
### SOLENOID FEATURES AND STANDARD DATA

Type	Pull type DC solenoid	
Nominal voltage range <sup>1</sup>	V	6 to 48
Loading force @ 20 mm compression	g	85
Cable	Flying wires	
Cable length	mm	230
Service life	At least 500000 single strokes	
Return spring	Yes	
Plunger material	Carbon steel 12L14	
IP rating	IP00	
Insulation class	B	
Weight	g	315
Operating temperature	°C	-5 to 40
Manufacturing standard	ISO9001:2008   ISO/TS 16949:2002	
CE label   UL label	No   No	

### PERFORMANCE GRAPH



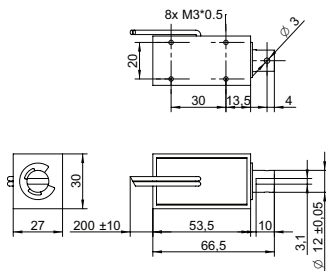
### PLUNGER PROFILE



### NOTES

- Nominal voltages, 100 % duty cycle.
- Measured at 20°C.

## DRAWING (mm)



## PHOTO



## MODEL NO. DESIGNATION

F1253L - VOLTAGE

Example: F1253L-06V

## ACCESSORIES

C = customizations are offered on demand even for smaller quantities. Typical customizations are indicated with a green dot at column end. Please contact us for any customization request.

### SOLENOID DATA

Duty cycle	%	100	50	25	10
Power	W	6	12	24	60
Max. time in energized state	s	∞	140	50	9

### PERFORMANCE DATA F1253L-06V

Duty cycle	%	100	50	25	10
Individual voltages	V	6	8.5	12	19
Resistance	Ω	6			

### PERFORMANCE DATA F1253L-12V

Duty cycle	%	100	50	25	10
Individual voltages	V	12	17	24	38
Resistance	Ω	24			

### PERFORMANCE DATA F1253L-24V

Duty cycle	%	100	50	25	10
Individual voltages	V	24	34	48	76
Resistance	Ω	96			

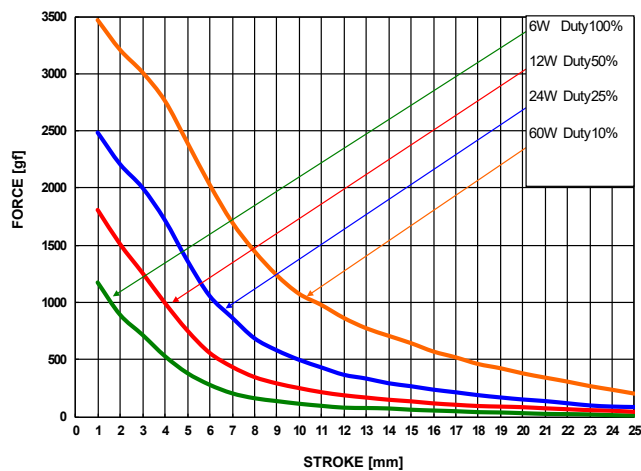
### PERFORMANCE DATA F1253L-48V

Duty cycle	%	100	50	25	10
Individual voltages	V	48	68	96	152
Resistance	Ω	384			

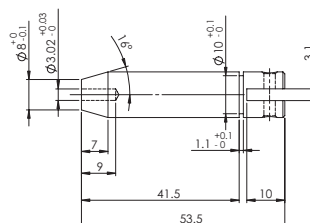
### SOLENOID FEATURES AND STANDARD DATA

Type	Pull type DC solenoid		●
Nominal voltage range <sup>1</sup>	V	6 to 48	●
Loading force @ 20 mm compression	g	85	
Cable	Flying wires		●
Cable length	mm	230	
Service life	At least 500000 single strokes		
Return spring	Yes		
Plunger material	Carbon steel 12L14		
IP rating	IP00		
Insulation class	B		
Weight	g	205	
Operating temperature	°C	-5 to 40	
Manufacturing standard	ISO9001:2008   ISO/TS 16949:2002		
CE label   UL label	No   No		

### PERFORMANCE GRAPH



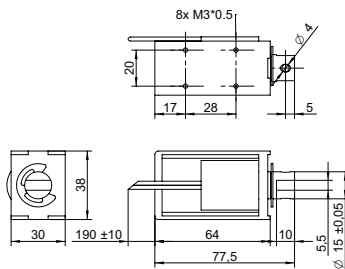
### PLUNGER PROFILE



### NOTES

- Nominal voltages, 100 % duty cycle.
- Measured at 20°C.

## DRAWING (mm)



## PHOTO



## MODEL NO. DESIGNATION

F1564L - VOLTAGE

Example: F1564L-06V

## ACCESSORIES

C = customizations are offered on demand even for smaller quantities. Typical customizations are indicated with a green dot at column end. Please contact us for any customization request.

### SOLENOID DATA

Duty cycle	%	100	50	25	10
Power	W	8	16	32	80
Max. time in energized state	s	∞	140	50	9

### PERFORMANCE DATA F1564L-06V

Duty cycle	%	100	50	25	10
Individual voltages	V	6	8.5	12	19
Resistance	Ω	6			

### PERFORMANCE DATA F1564L-12V

Duty cycle	%	100	50	25	10
Individual voltages	V	12	17	24	38
Resistance	Ω	24			

### PERFORMANCE DATA F1564L-24V

Duty cycle	%	100	50	25	10
Individual voltages	V	24	34	48	76
Resistance	Ω	96			

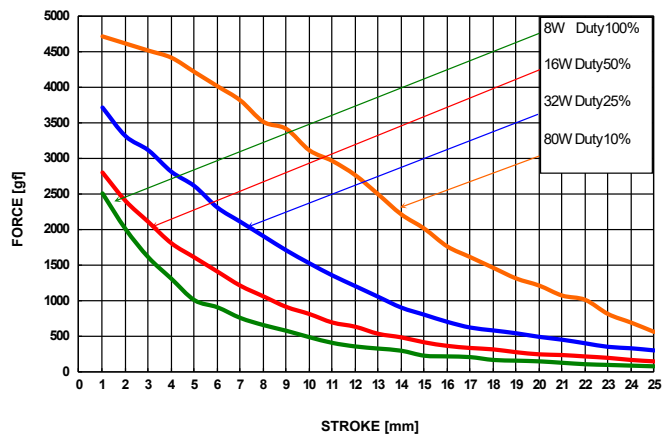
### PERFORMANCE DATA F1564L-48V

Duty cycle	%	100	50	25	10
Individual voltages	V	48	68	96	152
Resistance	Ω	384			

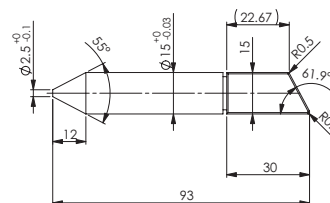
### SOLENOID FEATURES AND STANDARD DATA

Type	Pull type DC solenoid		●
Nominal voltage range <sup>1</sup>	V	6 to 48	●
Loading force @ 5 mm compression	g	370	
Cable	Flying wires		●
Cable length	mm	230	
Service life	At least 500000 single strokes		
Return spring	Yes		
Plunger material	Carbon steel 12L14		
IP rating	IP00		
Insulation class	B		
Weight	g	363	
Operating temperature	°C	-5 to 40	
Manufacturing standard	ISO9001:2008   ISO/TS 16949:2002		
CE label   UL label	No   No		

### PERFORMANCE GRAPH



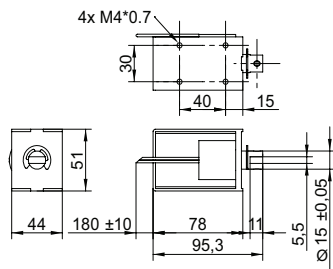
### PLUNGER PROFILE



### NOTES

- Nominal voltages, 100 % duty cycle.
- Measured at 20°C.

## DRAWING (mm)



## PHOTO



## MODEL NO. DESIGNATION

F1578L - VOLTAGE

Example: F1578L-06V

## ACCESSORIES

C = customizations are offered on demand even for smaller quantities. Typical customizations are indicated with a green dot at column end. Please contact us for any customization request.

### SOLENOID DATA

	%	100	50	25	10
Duty cycle	%	100	50	25	10
Power	W	13	26	52	130
Max. time in energized state	s	∞	160	80	32

### PERFORMANCE DATA F1578L-06V

	%	100	50	25	10
Duty cycle	%	100	50	25	10
Individual voltages	V	6	8.5	12	19
Resistance	Ω	2.8			

### PERFORMANCE DATA F1578L-12V

	%	100	50	25	10
Duty cycle	%	100	50	25	10
Individual voltages	V	12	17	24	38
Resistance	Ω	11			

### PERFORMANCE DATA F1578L-24V

	%	100	50	25	10
Duty cycle	%	100	50	25	10
Individual voltages	V	24	34	48	76
Resistance	Ω	44			

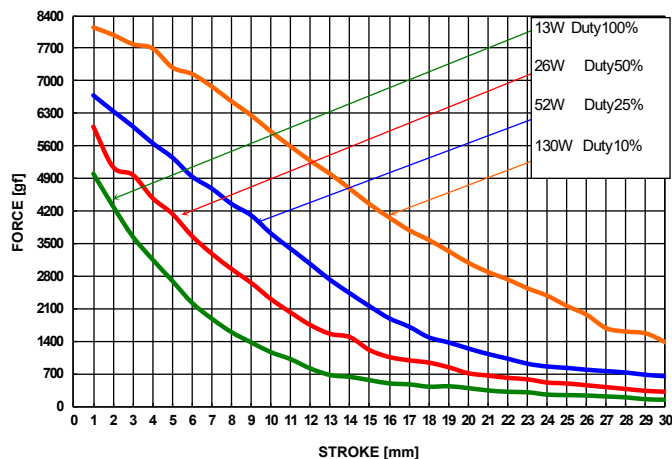
### PERFORMANCE DATA F1578L-48V

	%	100	50	25	10
Duty cycle	%	100	50	25	10
Individual voltages	V	48	68	96	152
Resistance	Ω	177			

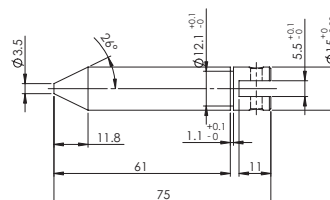
### SOLENOID FEATURES AND STANDARD DATA

Type	Pull type DC solenoid		●
Nominal voltage range <sup>1</sup>	V	6 to 48	●
Loading force @ 5 mm compression	g	370	
Cable	Flying wires		●
Cable length	mm	230	
Service life	At least 500000 single strokes		
Return spring	Yes		
Plunger material	Carbon steel 12L14		
IP rating	IP00		
Insulation class	B		
Weight	g	800	
Operating temperature	°C	-5 to 40	
Manufacturing standard	ISO9001:2008   ISO/TS 16949:2002		
CE label   UL label	No   No		

### PERFORMANCE GRAPH



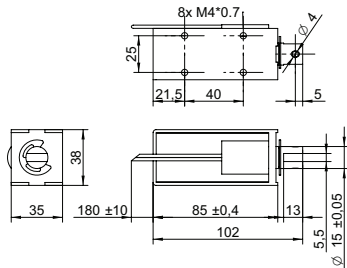
### PLUNGER PROFILE



### NOTES

- Nominal voltages, 100 % duty cycle.
- Measured at 20°C.

## DRAWING (mm)



## PHOTO



## MODEL NO. DESIGNATION

F1585L - VOLTAGE

Example: F1585L-06V

## ACCESSORIES

C = customizations are offered on demand even for smaller quantities. Typical customizations are indicated with a green dot at column end. Please contact us for any customization request.

### SOLENOID DATA

	%	100	50	25	10
Duty cycle	%	100	50	25	10
Power	W	13	25	51	127
Max. time in energized state	s	∞	160	80	32

### PERFORMANCE DATA F1585L-06V

	%	100	50	25	10
Duty cycle	%	100	50	25	10
Individual voltages	V	6	8.5	12	19
Resistance	Ω	2.8			

### PERFORMANCE DATA F1585L-12V

	%	100	50	25	10
Duty cycle	%	100	50	25	10
Individual voltages	V	12	17	24	38
Resistance	Ω	11			

### PERFORMANCE DATA F1585L-24V

	%	100	50	25	10
Duty cycle	%	100	50	25	10
Individual voltages	V	24	34	48	76
Resistance	Ω	45			

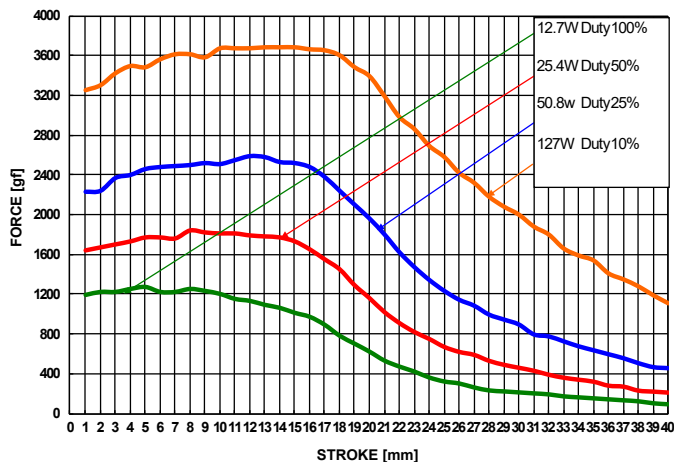
### PERFORMANCE DATA F1585L-48V

	%	100	50	25	10
Duty cycle	%	100	50	25	10
Individual voltages	V	48	68	96	152
Resistance	Ω	181			

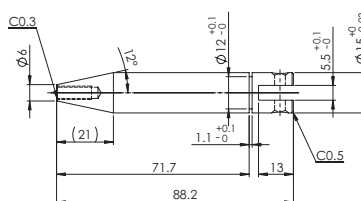
### SOLENOID FEATURES AND STANDARD DATA

Type	Pull type DC solenoid		●
Nominal voltage range <sup>1</sup>	V	6 to 48	●
Loading force @ 5 mm compression	g	370	
Cable	Flying wires		●
Cable length	mm	230	
Service life	At least 500000 single strokes		
Return spring	Yes		
Plunger material	Carbon steel 12L14		
IP rating	IP00		
Insulation class	B		
Weight	g	530	
Operating temperature	°C	-5 to 40	
Manufacturing standard	ISO9001:2008   ISO/TS 16949:2002		
CE label   UL label	No   No		

### PERFORMANCE GRAPH



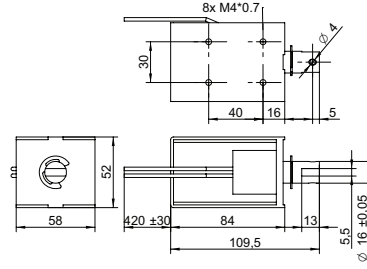
### PLUNGER PROFILE



### NOTES

- Nominal voltages, 100 % duty cycle.
- Measured at 20°C.

### DRAWING (mm)



### PHOTO



### MODEL NO. DESIGNATION

F1683L - VOLTAGE

Example: F1683L-06V

### ACCESSORIES

C = customizations are offered on demand even for smaller quantities. Typical customizations are indicated with a green dot at column end. Please contact us for any customization request.

### SOLENOID DATA

Duty cycle	%	100	50	25	10
Power	W	16	32	64	160
Max. time in energized state	s	∞	250	120	40

### PERFORMANCE DATA F1683L-06V

Duty cycle	%	100	50	25	10
Individual voltages	V	6	8.5	12	19
Resistance	Ω	2.3			

### PERFORMANCE DATA F1683L-12V

Duty cycle	%	100	50	25	10
Individual voltages	V	12	17	24	38
Resistance	Ω	9			

### PERFORMANCE DATA F1683L-24V

Duty cycle	%	100	50	25	10
Individual voltages	V	24	34	48	76
Resistance	Ω	36			

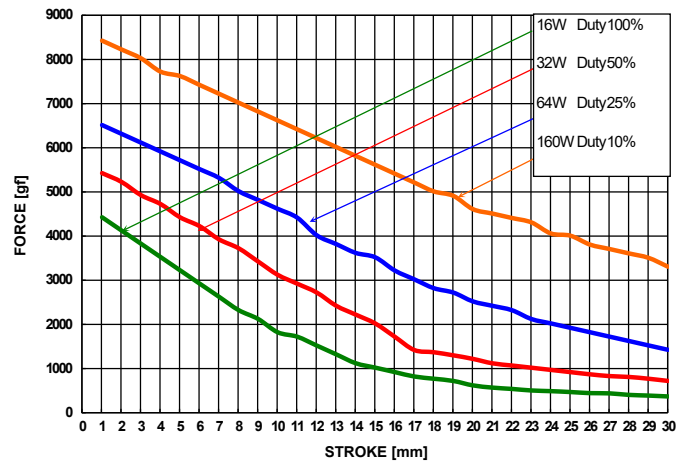
### PERFORMANCE DATA F1683L-48V

Duty cycle	%	100	50	25	10
Individual voltages	V	48	68	96	152
Resistance	Ω	144			

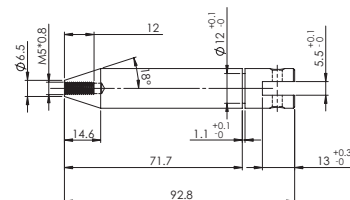
### SOLENOID FEATURES AND STANDARD DATA

Type	Pull type DC solenoid		●
Nominal voltage range <sup>1</sup>	V	6 to 48	●
Loading force @ 5 mm compression	g	260	
Cable	Flying wires		●
Cable length	mm	230	
Service life	At least 500000 single strokes		
Return spring	Yes		
Plunger material	Carbon steel 12L14		
IP rating	IP00		
Insulation class	B		
Weight	g	1090	
Operating temperature	°C	-5 to 40	
Manufacturing standard	ISO9001:2008   ISO/TS 16949:2002		
CE label   UL label	No   No		

### PERFORMANCE GRAPH



### PLUNGER PROFILE



### NOTES

- Nominal voltages, 100 % duty cycle.
- Measured at 20°C.